

**The Islamic University**  
**College of Medical Technologies**  
**Department of Radiology Technologies**  
**First Stage**  
**Lecture three: Skeleton of lower limbs**  
**MSC:Tariq Mohammed Alshybany /MSC:Mohammed.K.S.Alquraishi.**  
**MSC:Ali nahed Abdu Alameer**



## **Practical General Anatomy**

### **LAB 3**

### **Skeleton of lower limbs**

Themes of the lecture:-

- 1- Introduction to lower limbs.
- 2- Pectoral Girdle.
- 3- Bones of lower limbs.
- 4- Figures of bones.
- 5 The foot.

The purpose of the lecture:-

(Introducing the student to the lower limbs and some details)

Behavior Objectives:-

- 1- To know the definition of the lower limbs.
- 2- In order for the student to learn the details of lower limbs.
- 3- The student should be able to know scientific names of lower limbs.
- 4- The student be able to differentiate bones of lower limbs.
- 5- The student enumerates all parts of lower limbs.

References of the lecture:-

[https://books.google.iq/books?id=aK52DwAAQBAJ&printsec=frontcover&dq=general+anatomy+book+pdf&hl=ar&sa=X&redir\\_esc=y#v=onepage&q&f=false](https://books.google.iq/books?id=aK52DwAAQBAJ&printsec=frontcover&dq=general+anatomy+book+pdf&hl=ar&sa=X&redir_esc=y#v=onepage&q&f=false)

[https://books.google.iq/books?id=6bZEDwAAQBAJ&printsec=frontcover&dq=general+anatomy+book+pdf&hl=ar&sa=X&redir\\_esc=y#v=onepage&q&f=false](https://books.google.iq/books?id=6bZEDwAAQBAJ&printsec=frontcover&dq=general+anatomy+book+pdf&hl=ar&sa=X&redir_esc=y#v=onepage&q&f=false)

## Pelvic girdle

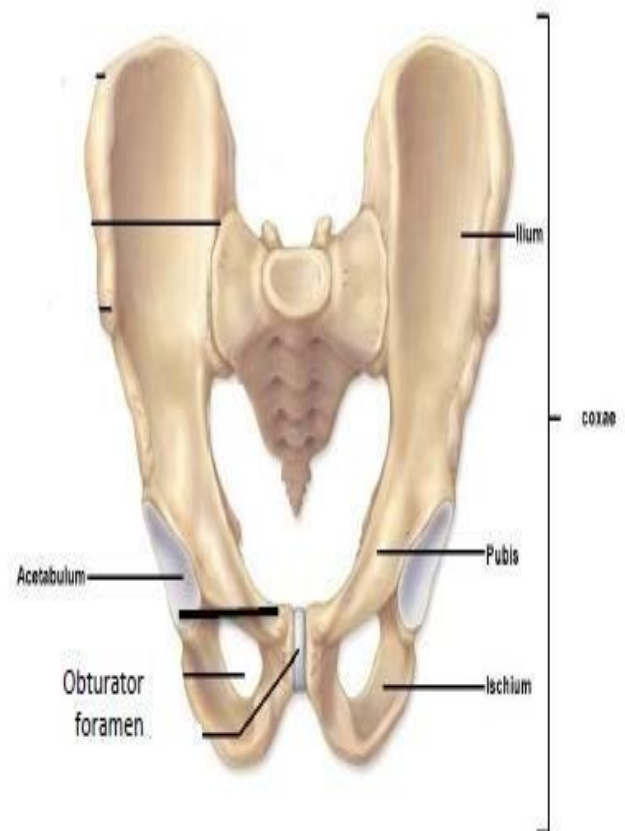
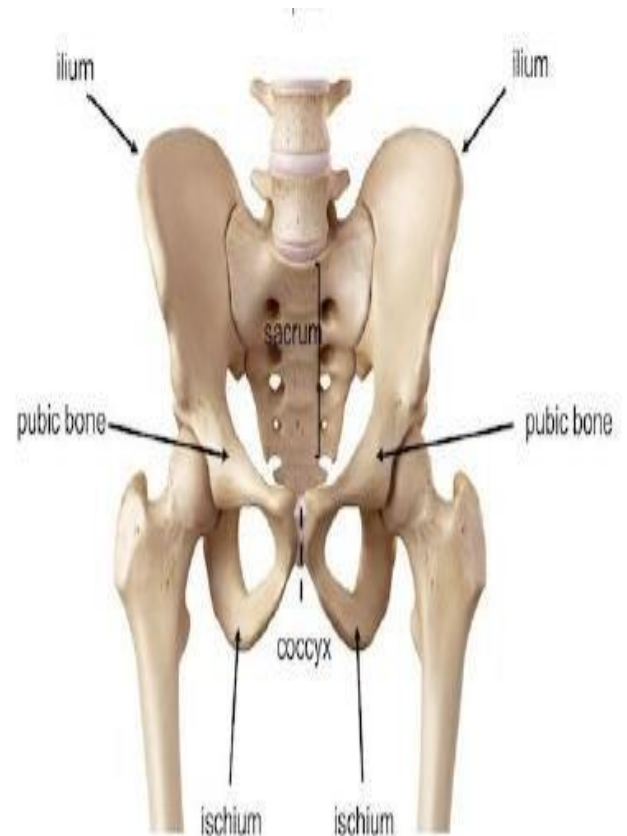
Is the place of attachment for the lower limbs.

It's formed by paired ring bones(left and right) called **coxae** or **hip bone**, articulating with the sacrum ,each coxae consist of three parts:

- .**ilium**: is the upper part .1
- .**Pubis**: is the anterior part .2
- .**ischium**: the posterior part .3

**Acetabulum cavity** : for articulates with the .head of the femur bone

**Obturator foramen**: for the passage of nerve and blood vessels



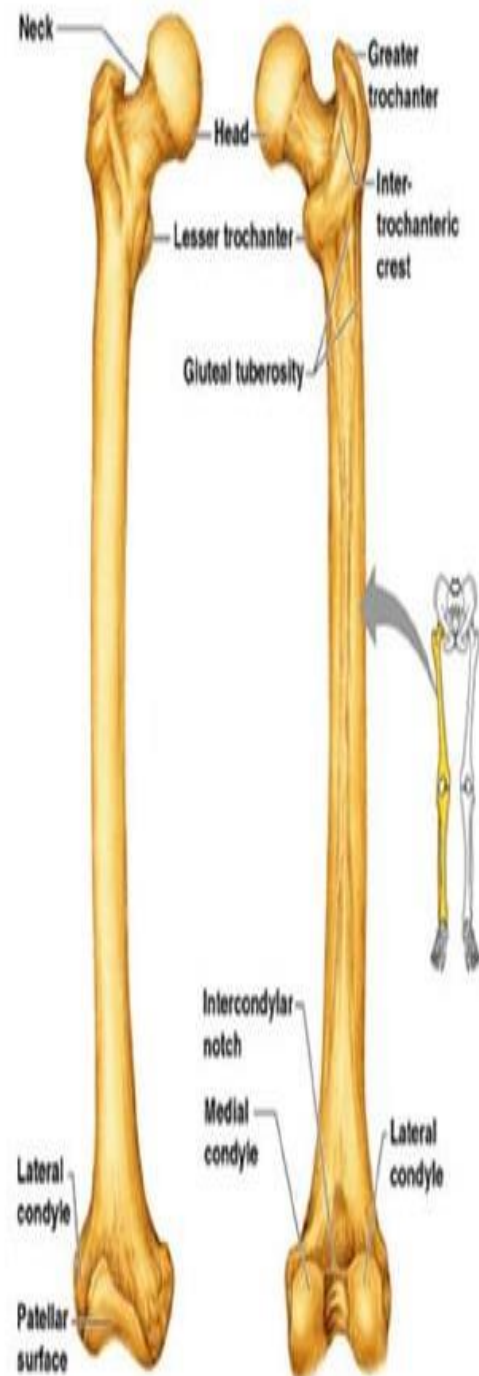
## Lower limbs bones

### 1- Thigh

It contains a single bone called **femur** which is the longest and strongest bone in the skeleton.

### 2- Patella (knee)

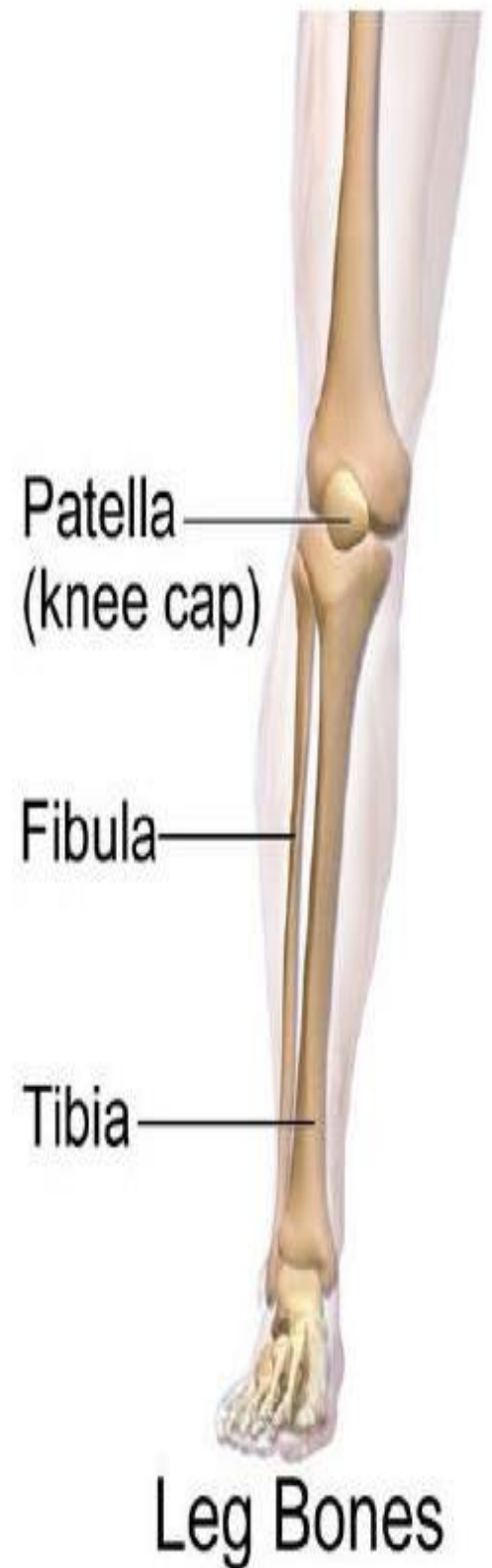
It articulates with the **patellar groove** of the femur.



## 3- Leg

The portion of the lower limb between the knee and the ankle, contains two bones:

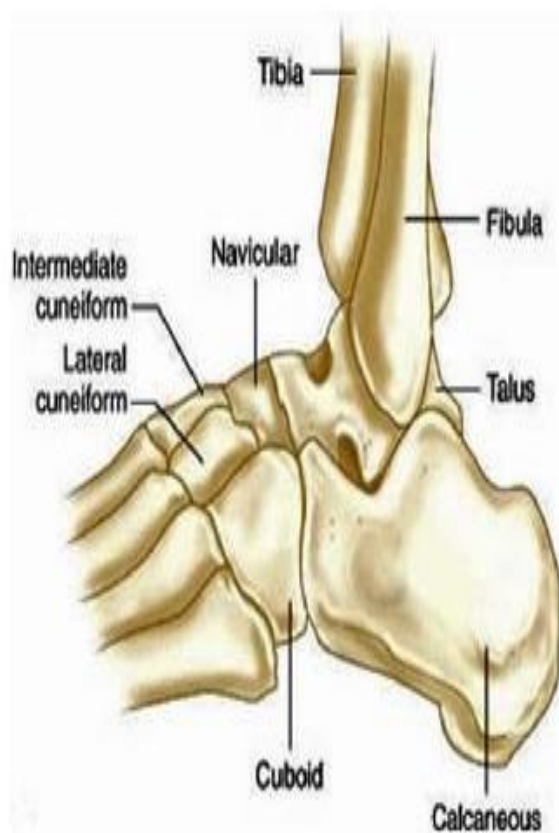
- **Tibia.**
- **Fibula.**



## 4- Ankle (Tarsals)

The ankle consists of **seven** bones, the **Talus** articulates with tibia and fibula to form the **ankle joint**.

The **Calcaneus** located inferior and lateral to the talus, it supports other ankle bones.



## 5-Foot

Foot consists of **metatarsals** and **toe**.

The great toe have **two** phalanges and other toe have **three** phalanges.

